

UVP MultiDoc-It™

For multiple user laboratories capturing gel images

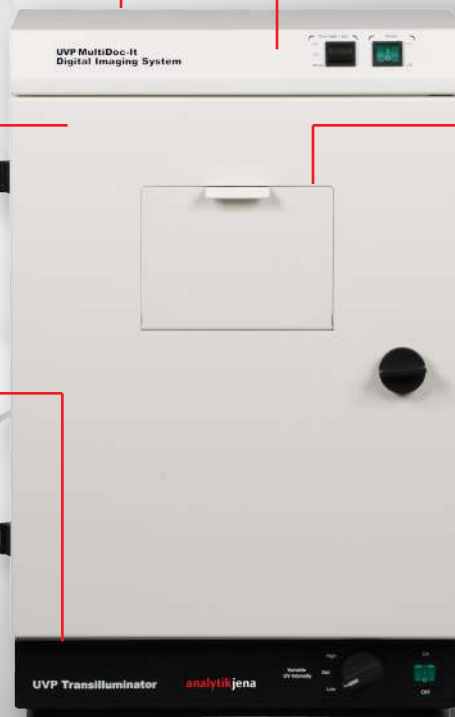
Camera mounts in the darkroom

Ethidium Bromide filter located inside the darkroom

Optional UV lamps mount in the darkroom for overhead UV lighting (lamps are included with MultiDoc-It TLC version)

Wide access door with UV blocking window, allows visibility of gels

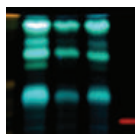
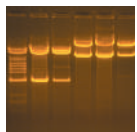
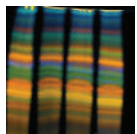
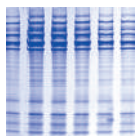
Transilluminator connects to the darkroom; UV shuts off when door is open (select from several UVP Transilluminator models)



The sturdy housing of the MultiDoc-It is for multiple user labs capturing gel images. For imaging in TLC Thin Layer Chromatography applications, the system is available with epi UV lamps.

- High resolution megapixel digital color camera for capturing images
- Rugged metal darkroom, with overhead white light, mounts onto a transilluminator (or plate for TLC applications)
- Select systems feature side access doors (3 door models) for cutting or moving gels without opening the front door

Image Capture, Image Enhancement and Report Generation



Exclusive software controls the camera functions and image capture. Easily see live preview of images. Over-saturation warning displays red on an image to alert users to adjust exposure. Users can select preset or user defined settings and templates. Templates allows users to save settings and use them for repeat experiments. Software enables image enhancement functions such as:

- Enhance images with adjustments including brightness, contrast, gamma, emboss, invert and pseudocolor
- Annotate images with text, lines, arrows, ellipses and highlighter tools
- Reduce image noise with histogram and starfield subtraction

Report generation capabilities allow creation of detailed and user-configured reports showing all image data. History tracking records changes made to images. Report shows actions taken along with user information, notes, date and time.

Accessories



Optional UV lamps for overhead illumination.
254/365nm UV; 95-0021-12 (115V) and 95-0021-10 (230V)



Side access doors, available on select models, and UV blocking viewer window.



Optional Thermal Printer (89-0069-06 or 89-0357-01) for archive quality prints in seconds.



White Light Plate, 25x26cm, for viewing Coomassie blue and Silver stain type gels (38-0191-04)

Specifications:

Camera: Digi Cam 130; 17.9 MP resolution camera*
*For current camera specifications go to: us.analytik-jena.com or contact AJ US.

Dimensions: 14W x 12.7D x 19H in. (356 x 323 x 483mm)

Software: Camera controls
Image capture
Image enhancement

AJ's software requires Microsoft Windows 7, 8 or 10 (32-bit or 64-bit).

UV Transilluminator:

Select filter size: 20 x 20cm, 21 x 26cm or 25 x 26cm
UV wavelengths: Single UV (302nm), 2UV or 3UV (254/302/365nm)



WolfLabs

Pricing on any accessories shown can be found by keying the part number into the search box on our website.

The specifications listed in this brochure are subject to change by the manufacturer and therefore cannot be guaranteed to be correct. If there are aspects of the specification that must be guaranteed, please provide these to our sales team so that details can be confirmed.

www.wolflabs.co.uk

Tel : 01759 301142

Fax : 01759 301143

sales@wolflabs.co.uk

Please contact us if this literature doesn't answer all your questions.